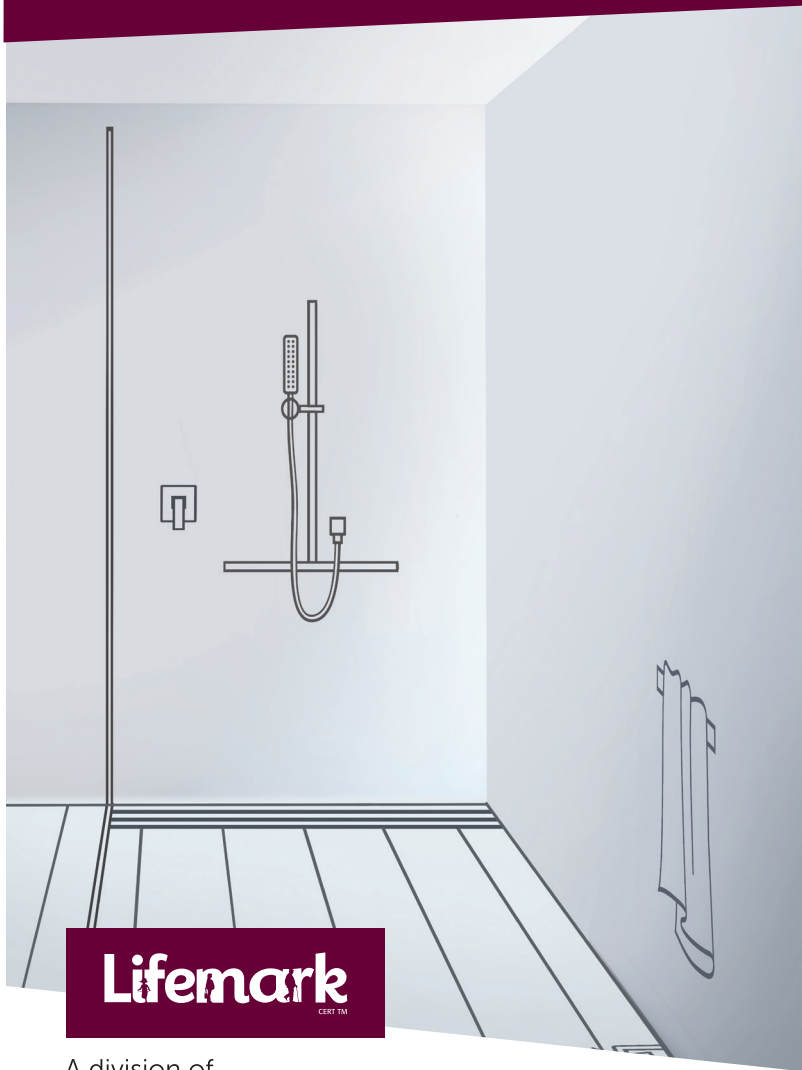


# RENOVATING BATHROOMS

Universal Design is a smart choice



**Lifemark**  
CERT™

A division of  
**CCS Disability Action**

---

# UNIVERSALLY DESIGNED BATHROOMS



Universal Design is for everyone

**UNIVERSAL DESIGN IS A FOCUS ON DESIGNING A BATHROOM THAT SUPPORTS INDEPENDENT LIVING AND WILL WORK FOR EVERYONE OF ANY AGE OR ABILITY.**

**LIFE'S EVENTS, SUCH AS POST SURGICAL RECOVERY AND COPING WITH SERIOUS INJURY OR IMPAIRMENT, WILL HAVE FAR LESS IMPACT WITHIN THE HOME WITH UNIVERSAL DESIGN.**

**USABILITY IS A PARTICULARLY IMPORTANT ASPECT TO CONSIDER WHEN RENOVATING YOUR BATHROOM.**

## UNIVERSAL DESIGN IS ESSENTIAL FOR SOME, NECESSARY FOR MANY AND COMFORTABLE FOR ALL.



### LOCATION

The bathroom is located on the entry level next to living areas so you don't have to go up and down stairs



### SHOWER

- The shower has a level entry and a wide opening
- Shower walls are reinforced to allow installation of grab rails &/or a wall mounted shower chair
- The shower has a hand held shower rose



### TOILET

- The toilet is positioned next to a solid wall and the wall is reinforced to allow installation of a grab rail when needed



### HANDBASIN/VANITY

- A wall hung vanity unit provides for knee space underneath for wheelchair users



### TAPWARE

- Lever action or sensor tapware allows ease of use by anyone with limited dexterity



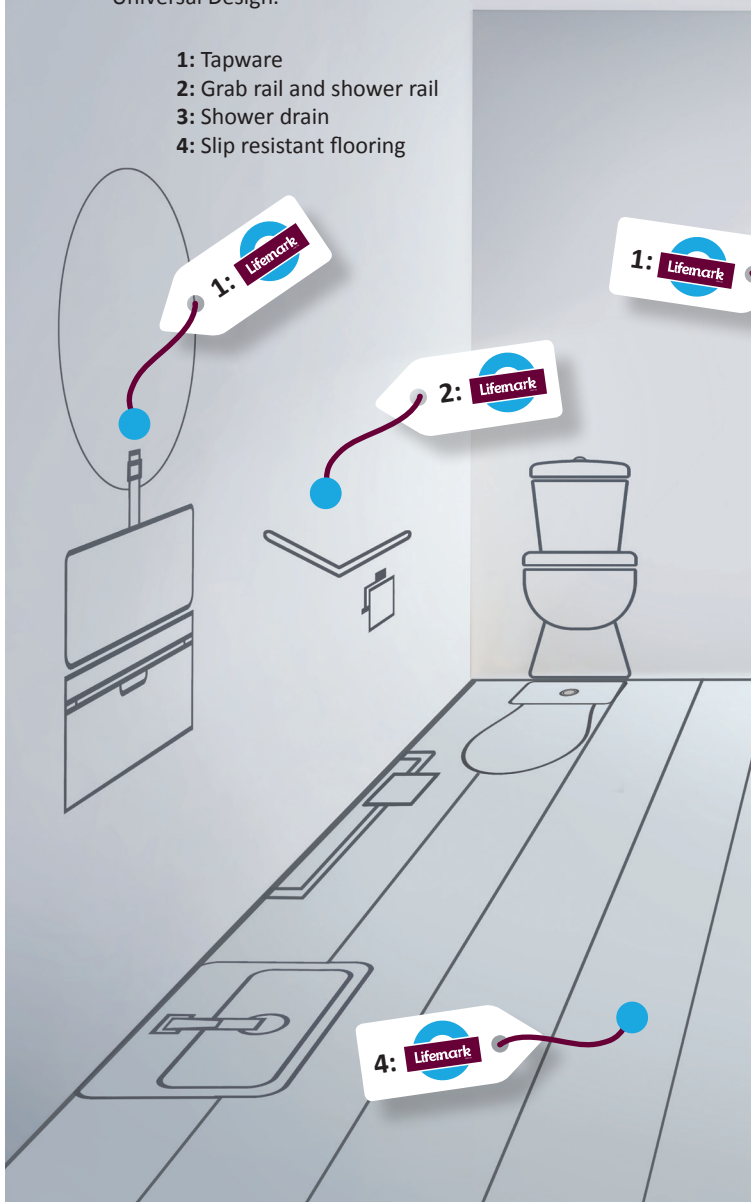
### FLOORING

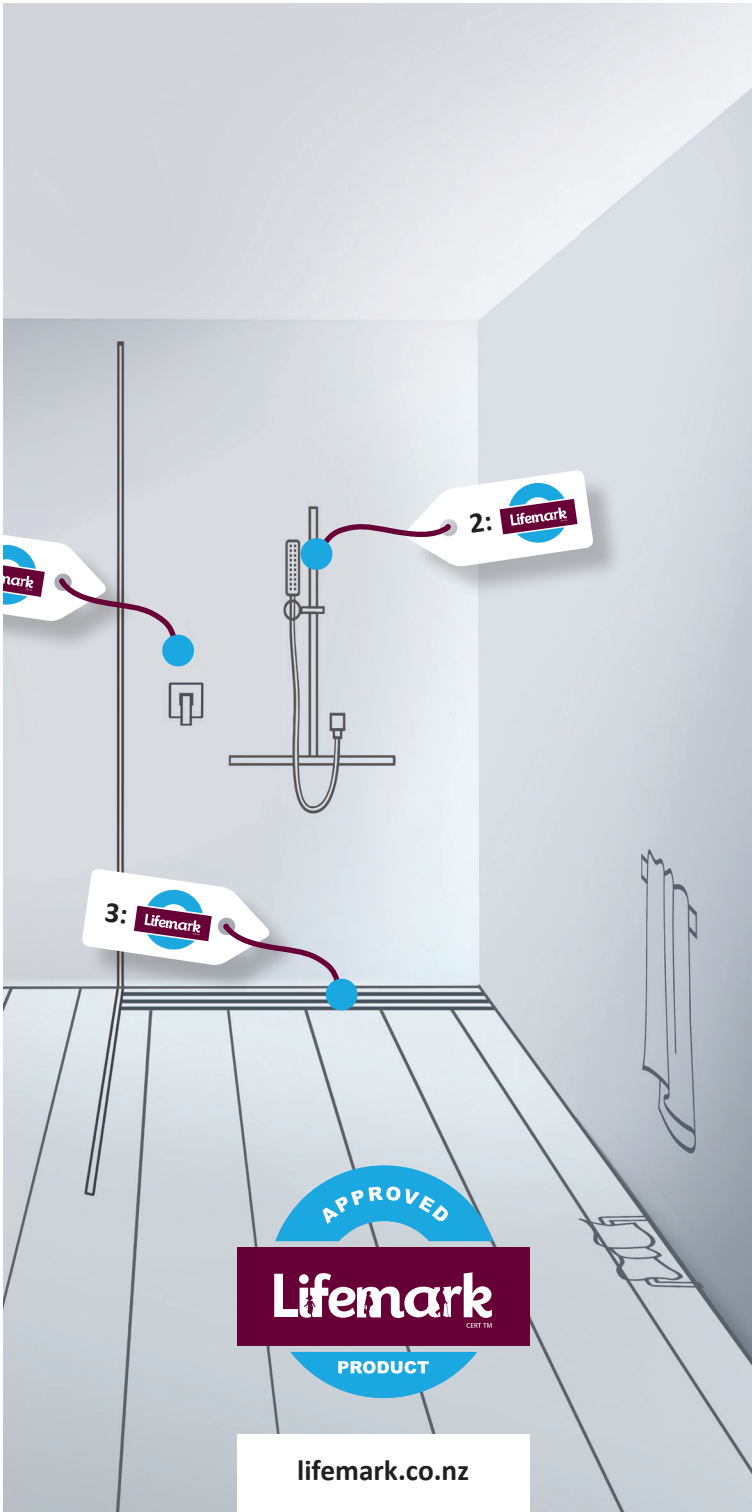
- Slip resistant flooring is essential in wet areas

# APPROVED PRODUCTS

Lifemark® approved products have been tested for ease of use and compliance to the principles of Universal Design.

- 1: Tapware
- 2: Grab rail and shower rail
- 3: Shower drain
- 4: Slip resistant flooring





APPROVED  
**Lifemark**  
CERT TM  
PRODUCT

[lifemark.co.nz](http://lifemark.co.nz)

# DIMENSIONAL DESIGN CONSIDERATIONS



## SOME DIMENSIONS TO CONSIDER

- Minimum floor space is at least 2.1m by 1.9m
- Toilet pan is centred 450-460mm from the sidewall
- The toilet extends 700-750mm from the back wall
- Transfer space or approach space of at least 800mm is in front of or beside toilet (Take note of any door swing)
- Wash basin has a knee clearance of at least 675mm from floor
- The minimum shower size is 900mm by 900mm
- Entrance to shower is at least 810mm wide

**YOU MAY ALSO WANT TO CONSIDER  
WIDER ACCESS INTO AND THROUGHOUT  
THE HOME TO ACHIEVE BETTER  
UNIVERSAL DESIGN OUTCOMES.**



### LIGHTING

Task lighting and sensor activated lighting will assist everyone.



### COLOUR CONTRAST

Contrasting tiles or colours will clearly identify key areas and enhance features.



### VENTILATION AND HEAT

Ensure bathrooms are well ventilated to ensure both visibility and slipperyness are not compromised.



### TOILET CHOICE

Higher toilets are easier to use as people age. A toilet that is visible from the doorway is easier for anyone with dementia.

**ADOPTING UNIVERSAL DESIGN PRACTICES WILL HELP YOUR HOME AS THIS SPATIAL UNDERSTANDING ASSISTS MULTIPLE USER REQUIREMENTS.**

## SPACE IN THE RIGHT PLACE

In New Zealand Lifemark® provides nationwide Universal Design assurance and review services. Lifemark® works with a wide range of building and design partners, in all cases these reviews include bathroom design as it is a critical part of any home. (Please note in some cases consents may be needed. Please check with your authorities or builder before starting a renovation project).



TE HUNGA HAUĀ MAURI MŌ NGĀ TĀNGATA KATOA

Lifemark® is a division of CCS Disability Action, a registered charity and community service organisation.

GLOBAL ENABLEMENT AWARDS 2018: Lifemark® was Awarded "The most outstanding Universal Design Innovator in the World"

**[lifemark.co.nz](http://lifemark.co.nz)**